

Shared ownership resale property
11 Horsewhim Drive, Kelly Bray, Callington PL17 8GL

New price!

60% Share - £63,000
Full price - £105,000 – Rent pcm £86.31



- 1 bedroom house
- fully fitted kitchen
- separate lounge
- neutral bathroom suite
- uPVC double glazing
- gas central heating
- allocated parking
- downstairs WC

Description

Situated in the village of Kelly Bray, on the outskirts of Callington, the property forms part of a quiet residential development. Floorboards have been laid in the loft for additional storage.

Close to varied local amenities and services, you are never far from the wonderful Cornish countryside.

Entrance

Front door opens onto lounge/diner.

Kitchen

8ft (2.4m) x 6.5ft (1.9m)

Fitted neutral kitchen with cooker point, plumbing for washing machine and non-slip flooring.

Lounge

15ft (4.5m) x 8.5 ft (2.6m)

Smartly presented with radiator, TV and telephone points and fitted carpet.



Downstairs WC

6ft (1.8m) x 7ft (2.1m)

A spacious cloakroom with pedestal wash basin and WC.

Bedroom

15ft (4.5 m) x 8.5ft (2.6m)

A comfortable double bedroom with fitted carpet and radiator a numerous power points.



Bathroom

6ft (1.8m) x 3ft (0.9m)

Classic white suite with a shower over the bath and pedestal hand basin.

Council Tax

Council tax band A.

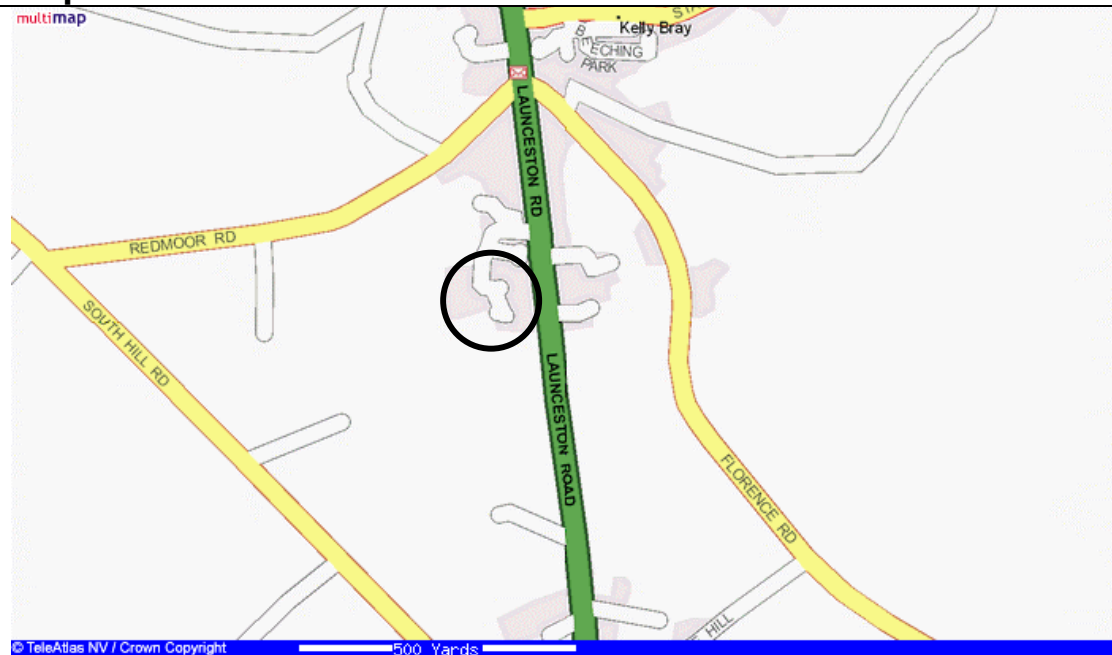
Services

Mains water supply, gas and electricity.

Local Authority

Caradon District Council.
Luxstowe House
Luxstowe, Liskeard, PL14 3DZ
01579 341000

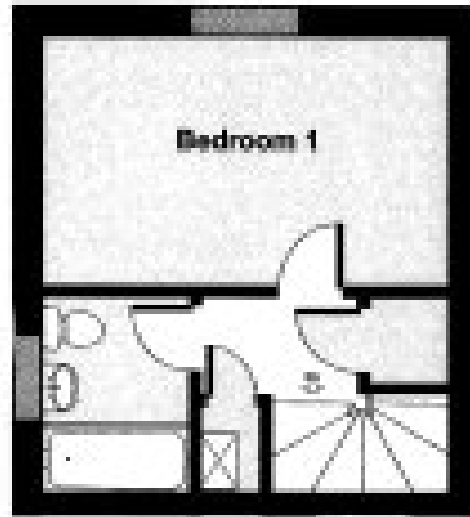
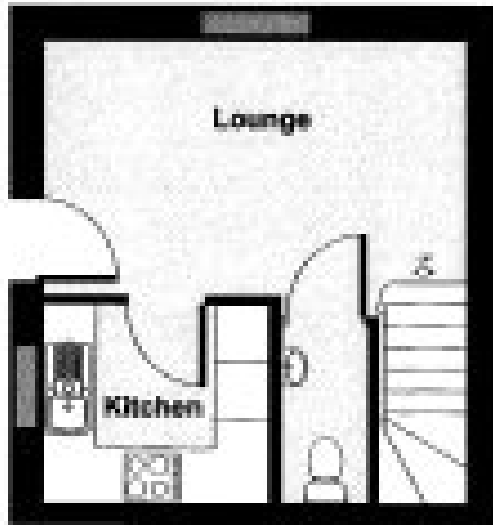
Map



Viewing

Strictly by appointment only through James McFettridge, Plymouth Greenbank office. Opening hours Monday – Friday 9am – 5pm.

Floor Plan



Disclaimer

Every care has been taken with the preparation of these Sales Particulars, but complete accuracy cannot be guaranteed. If there is any point, which is of particular importance to you, we will be pleased to check the information for you. These Particulars do not constitute a contract or part of a contract.

Measurements quoted are approximate and must not be used for carpets or furniture. The fixtures, fittings & appliances have not been tested and therefore no guarantee can be given that they are in working order. Internal photographs: are reproduced for general information and it cannot be Inferred that any item shown is included in the sale. Council Tax: You are advised to contact the local authority for details.

Drawings/Sketches/Plans. This representation is provided for general guidance and is not to scale.